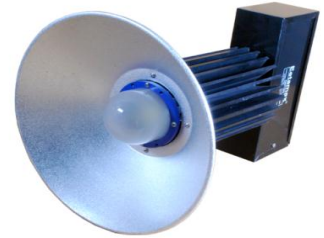
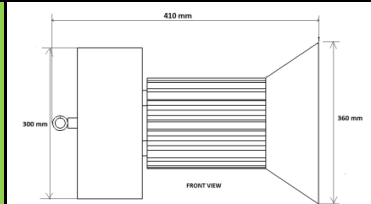
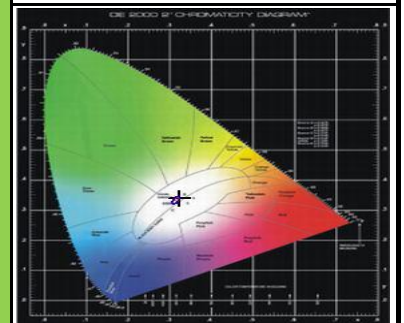
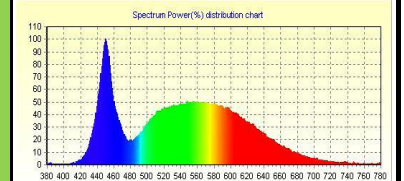
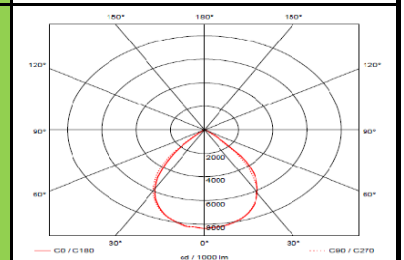


**MODEL NAME**
**EELS 80W COB HB**

Characteristic		Parameters	
<b>MECHANICAL SPECIFICATION</b>	Fixture Housing	Extruded Aluminium Housing (Heatsink)	
	Fixture Dimension	410 mm X 360 mm X 300 mm	
	Diffuser Closure	Diffused glass lens is provided on COB LED	
	Weight	4.560 Kg	
	IP Standard	IP65	
<b>LUMINARIES</b>	Total Wattage	80 Watts	
	Initial Lumen	9200 Lumen	
	Luminaire Efficacy (Lm/Watt)	115 Lm/W	
	Life	50,000 Burning Hours	
	Starting Time	Rapid (0.2 sec)	
	Operating Temperature	From -20° to +60° C	
<b>LED DRIVER</b>	Type of Driver	Constant Current (CC)	
	Input Voltage Range	150 VAC ~ 265 VAC	
	Frequency Range	50 Hz	
	Power factor	> 0.98	
	Total Harmonic Distortion	< 10 %	
	Surge Protection	3.75 Kv	
	Protection	Thermal Protection, Output Short Circuit Protection, Over Load Protection, Surge Protection, Over Voltage Protection	
<b>LED LAMP</b>	Light Source	COB LED	
	Lamp Efficacy	> 150 Lm/W	
	Colour Temperature	3000 K - 6500 K	
	CRI	> 80	
	Certification/Report	LM80 / Photo Bio.Test	
	Identification Feature	Unique Serial No.Printed on each Lamp	
<b>OPTICS</b>	Beam Angle	90°	
	Optics Type	Diffused Glass Lens	
	MOC of Optics	Diffused Borosilicate Glass	

**PRODUCT IMAGE**

**SCHEMATIC IMAGE**

**THERMAL IMAGE**

**LED SPECTRUM**

**LIGHT DISTRIBUTION**

**APPLICATION**

The luminaires can be used for lighting of indoor high bay applications in all type of industries

